

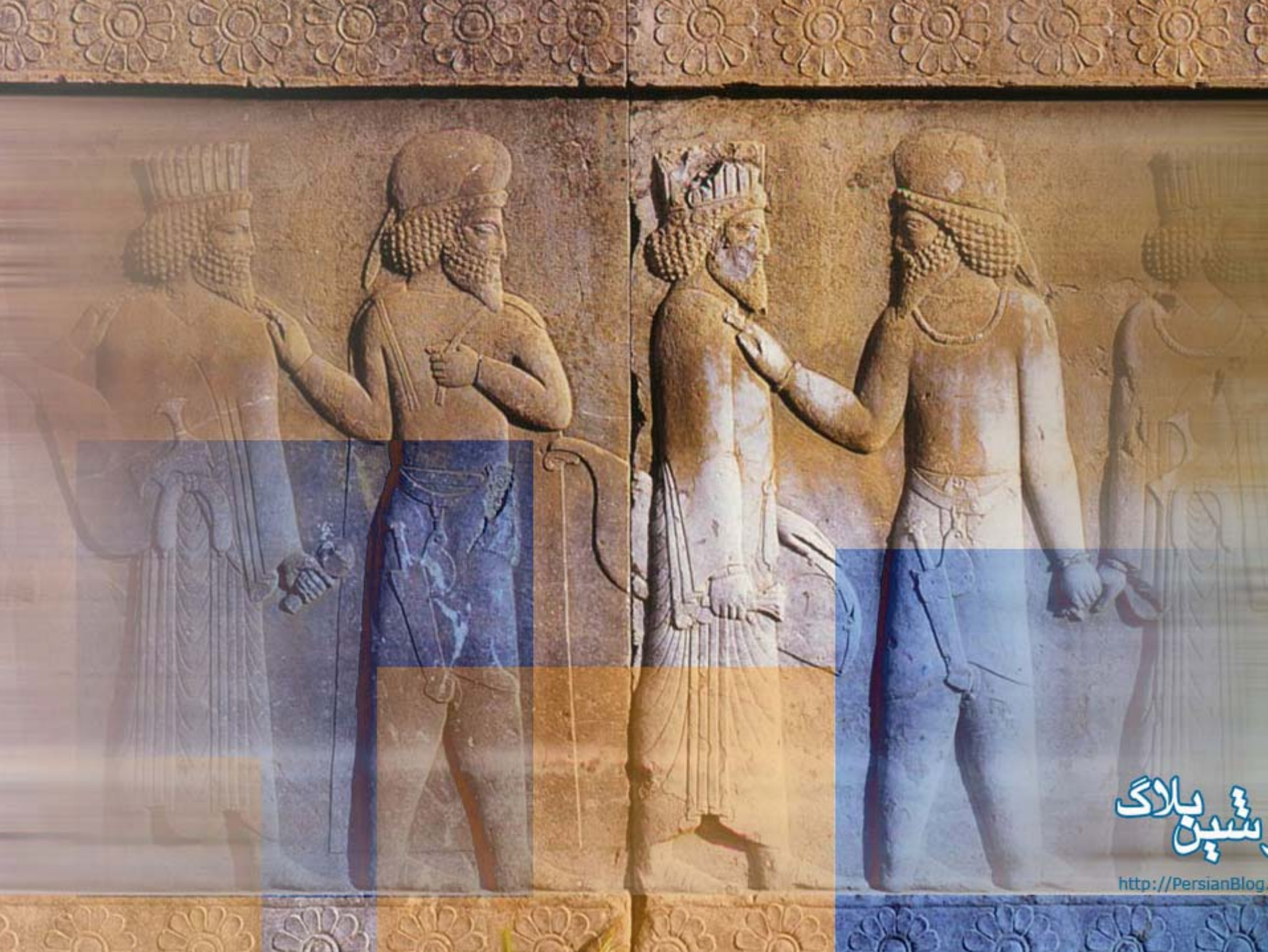
In The Name Of God
In The Name Of God





Title

Study on research priorities in the care of cancer patients



Authors:

Atefeh Ghanbari

*Assistant professor in Guilan Medical Science
University*

Mojgan Baghaie

Faculty member in Guilan Medical Science University







Introduction

Introduction

Determination of research priorities can be effective for care cancer patients





Objective

*To Determine the research priorities
for the cancer in
viewpoint of the nurses participants in the
conference of APOCP*





Method and Materials:

Cross-sectional Design





Questionnaire for first round

Survey of cancer nursing research priorities

Phase one

Please list below five important questions or problems relating to oncology/ palliative nursing practice which you consider should be researched . the questions might relate to a current area of patient care or they might relate to a new idea or innovative technique. You may have difficulty identifying as many as five problems .however , we encourage you to return questionnaire , irrespective of how many problems you identify , so that you may be involved in reviewing the ideas expressed by others.

When writing the problems , please be as specific you can . for example , instead of “ investigate the treatment of stomatitis” the question is “ is corsodyl mouthwash effective in the prevention and treatment of stomatitis ? “ other example may be “ compare a selection of dressings for ability to control odour from malignant wounds” or “ what are the informational needs of a patients at start of and during chemotherapy”.



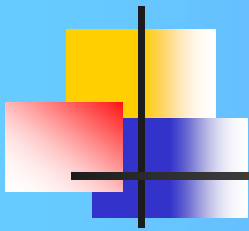


Data Collection

- *Demographic characteristics*
- *Phrases about cancer care priorities based on 4 cluster (35 phrases)*



Research priority themes



***Continuity
of care at
home**



***Pain**
•Mouth care
• Nutrition

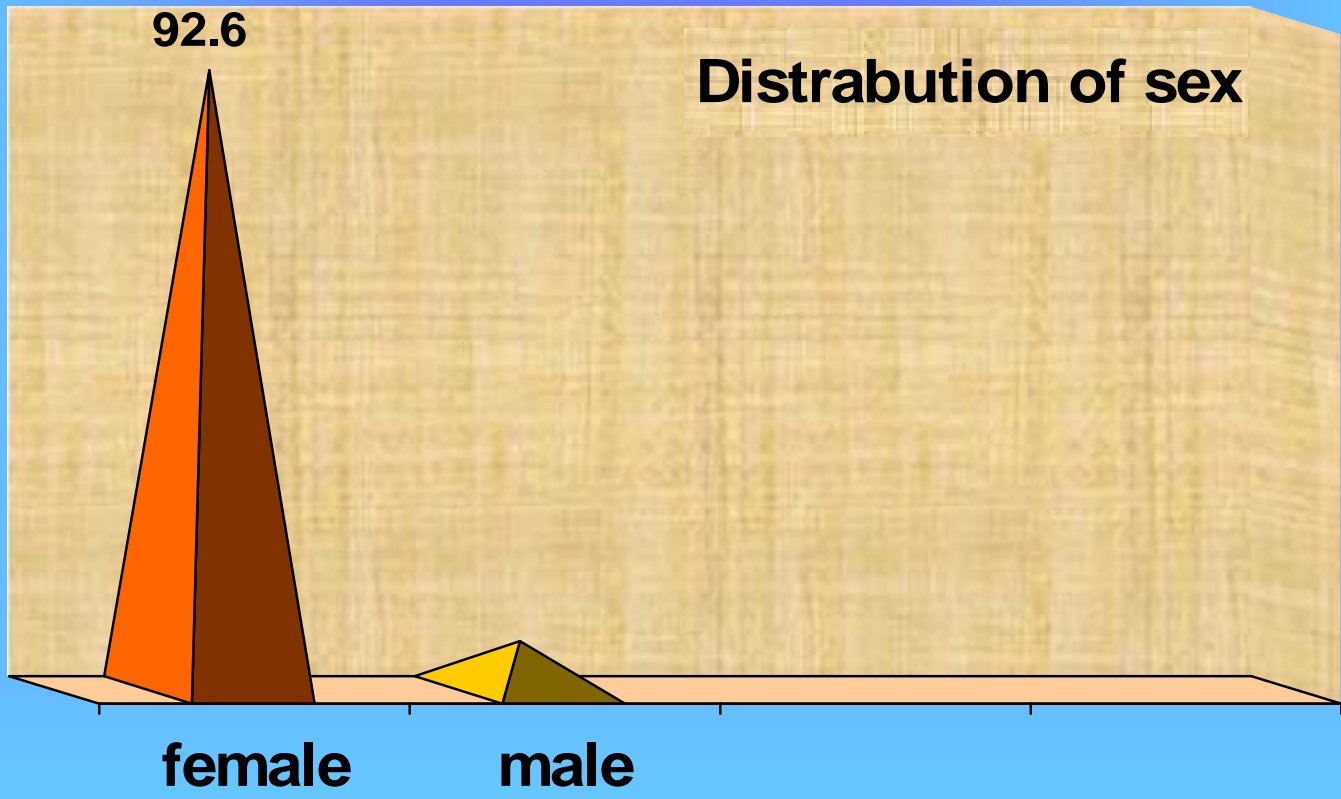


***Family experiences**
***Informational needs**
***communication**

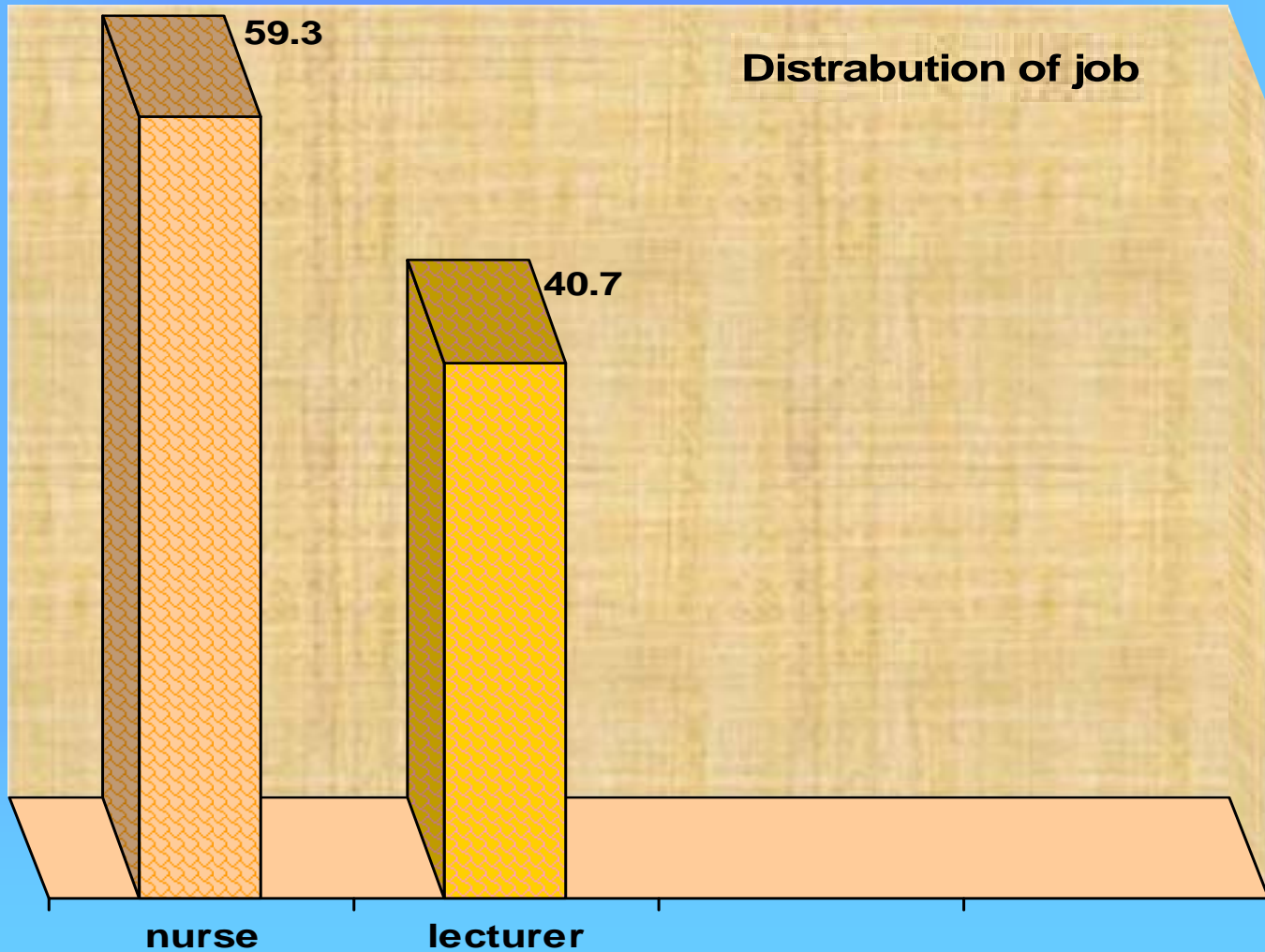
***Stress**
*** burn out**



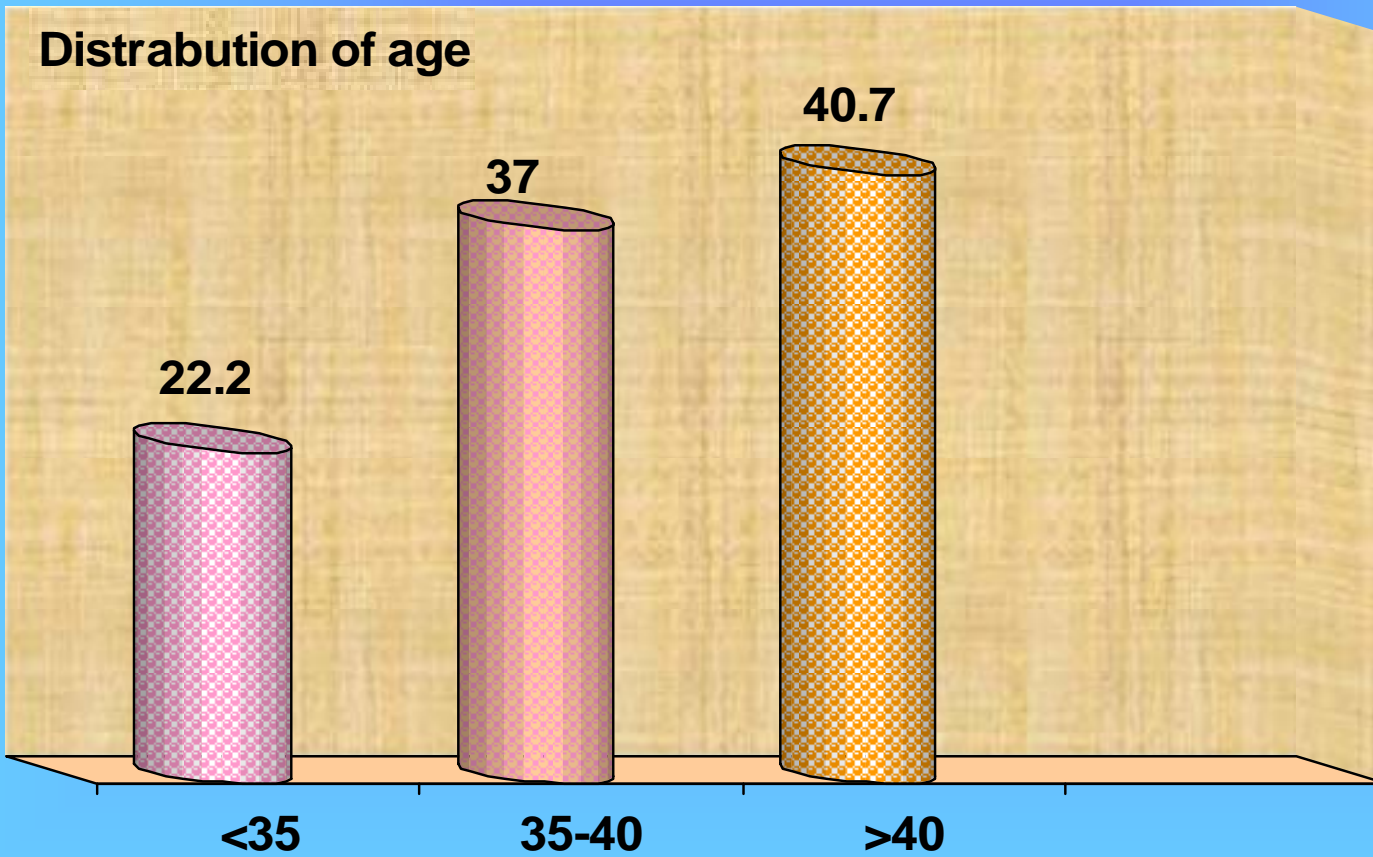
Results



Results



Results



38.1 ± 8.7

Results

46.3

Distrabution of clinical history

38.9

14.8

<10

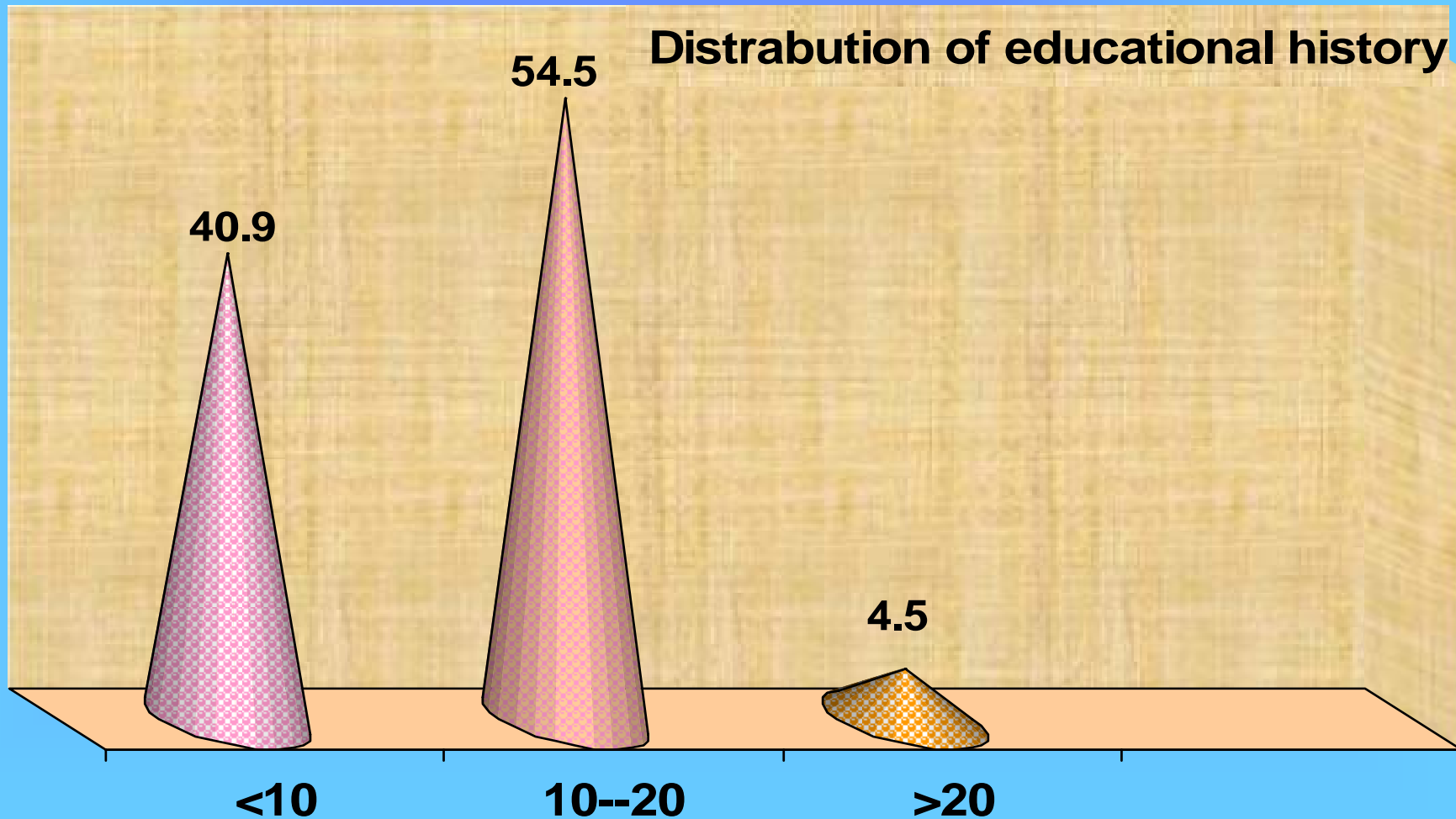
10--20

>20

$11.94 \pm 8/08$

Results

Distrabution of educational history





High Priorities:



- * socio-economic and psychological effects of cancer diagnosis on the family*
- * Care of mouth for the patients receiving chemotherapy*
- * Nutritional needs of the patients with cancer*
- * Sustaining strategies for care delivery at hospital and home*
- * Good communication with cancer patient*



Low Priorities:



** Typical characteristics of the affected people*

** Effect of education on the admission of the disease*

** Patients' understanding on conveying the complete information to them*

** Patients' quality of life*

** The role of nurse in palliative care*



Conclusion



Study findings showed that areas such as psychological ,socio-economic care and the special care such as mouth and nutrition care as well as the method of care delivery were still as the main concerns of the researchers in Iran .These results can help the clinical investigators choose the interesting and challenging topics in the field of cancer.

THANKS ALOT



T's Flowers & Things

